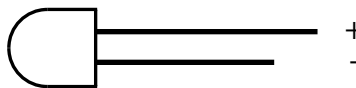


SL2

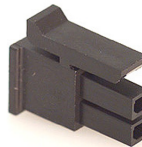
The long lead on the LED is the positive (+) lead.



Shift Light Output Connector

Molex 43025-0200 (2-pin)

Terminals: 43030-0009

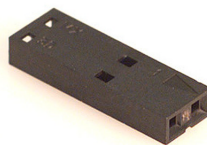


- 1. -
- 2. +

LED Connector

Molex 50-57-9002 (2-pin)

Terminals: 16-02-1125



LED:

Kingbright WP813SRC/E (Red)

Wire:

22 Gauge Red (+), 22 Gauge Black (-)